

Bluebeam® PDF Conversion Server™ Features & Compatibility

Compatibility & System Requirements

Operating System

Windows XP SP2, Windows 2003 Server

AutoCAD

AutoCAD 2004, 2005, 2006, 2007, 2008, 2009 (including MDT, ADT, LDT, etc.); AutoCAD LT and Inventor are supported through the Bluebeam Network PDF Printer

SolidWorks

SolidWorks 2004, 2005, 2006, 2007

Other Applications

The Bluebeam Network PDF Printer converts files from all CAD and Windows applications installed on the end user's PC. For example, Microsoft Office (i.e. Word, Excel, Powerpoint), AutoCAD LT, MicroStation, ProE, Unigraphics, Autodesk Inventor.

Basic Server Information

- This solution gives users automated, high-speed conversion of an unlimited number of documents.
- Bluebeam does not limit the number of users networked to the server solution.

Watched Folders

Bluebeam Conversion Server offers two options for Watched Folders: Existing File Folders and New Conversion Folders.

Existing File Folders

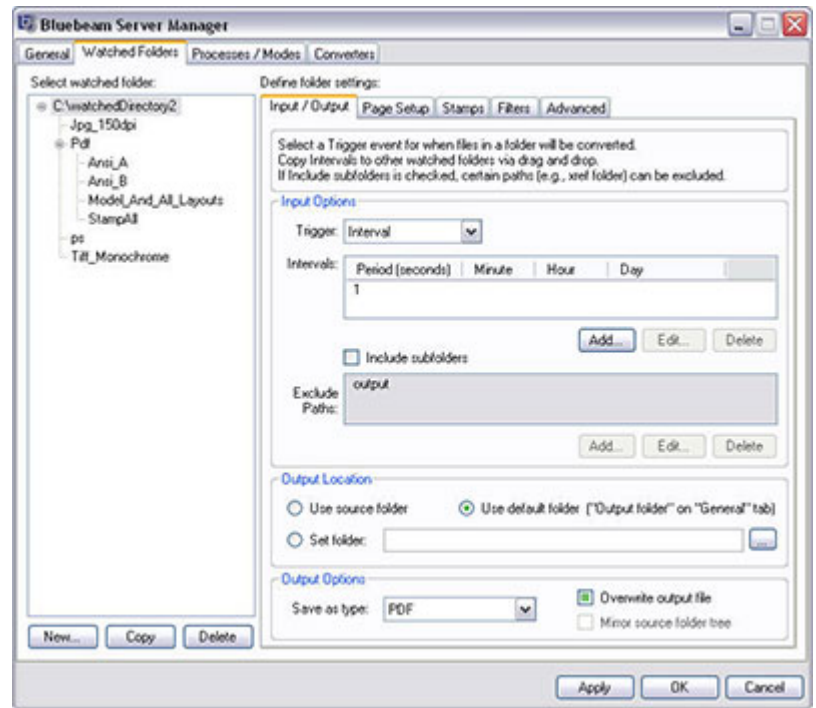
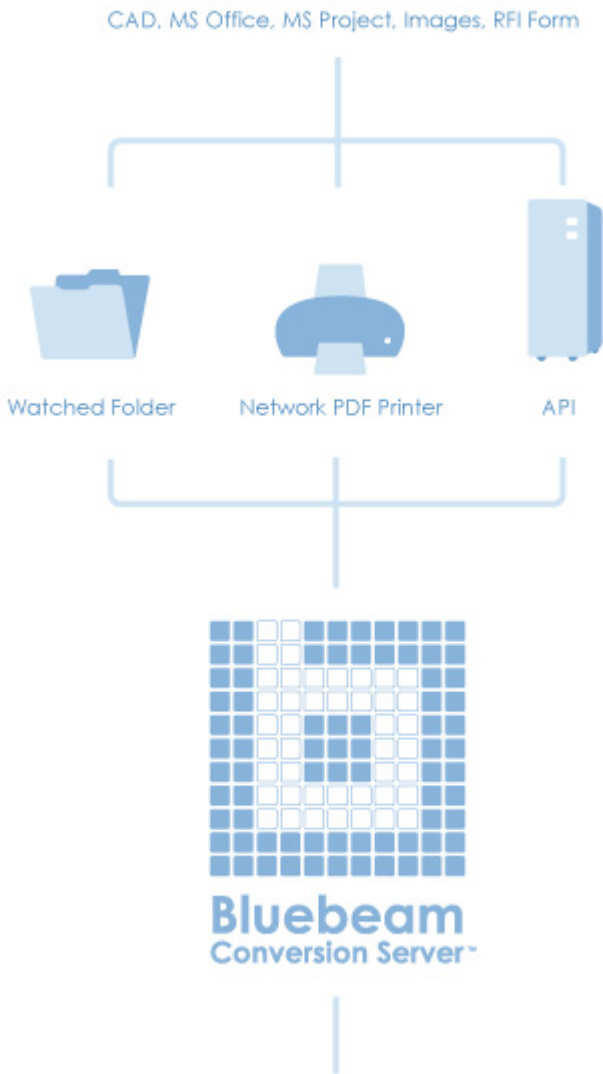
Bluebeam Conversion Server watches Existing File Folders located on your network containing your project files. The server is configured to convert new files or updated files based on the schedule you specify (hourly, daily, weekly, etc.). This requires no interaction by users, they simply open and save files as normal and PDF creation is automatic.

New Conversion Folders

New folders are created on your network that are configured specifically for converting files rather than storing files. The New Conversion Folders offer PDF creation in real time. With New Conversion Folders, users must copy the file into the folder to initiate PDF creation.

Watched Folders Features

- Companies can create an unlimited number of watched folders and output folders.
- Watched folders can be configured to use different conversion settings.
- Different watched folders will create different published files (i.e. one watched folder will output files of a certain page size, another may add a certain text stamp).
- Configuration options include:
 - Page size customization
 - PDF textstamping
 - PDF watermarking
 - Selected layouts
 - Resolution
 - Model vs. paper space
- Can be defined by directory or type of conversion.
- Can be specified by directory, any number of text stamps to apply ("On all files placed in Folder X, apply text stamp in the bottom left corner").



Server Manager

The Server Manager dialogue allows IT administrators to easily configure server settings without using xml. The Server Manager is used to:

- Configure watched folder input/output settings
- Enable multiple converters
- Choose parameters for automatically clearing archive folders
- View Bluebeam processes currently running on the server

Multiple Converters

Bluebeam Conversion Server can fully utilize dual core and quad core processors to convert multiple files simultaneously. Servers must have the ability to run multiple sessions of the host application in order to benefit from this functionality.

Reporting Tool

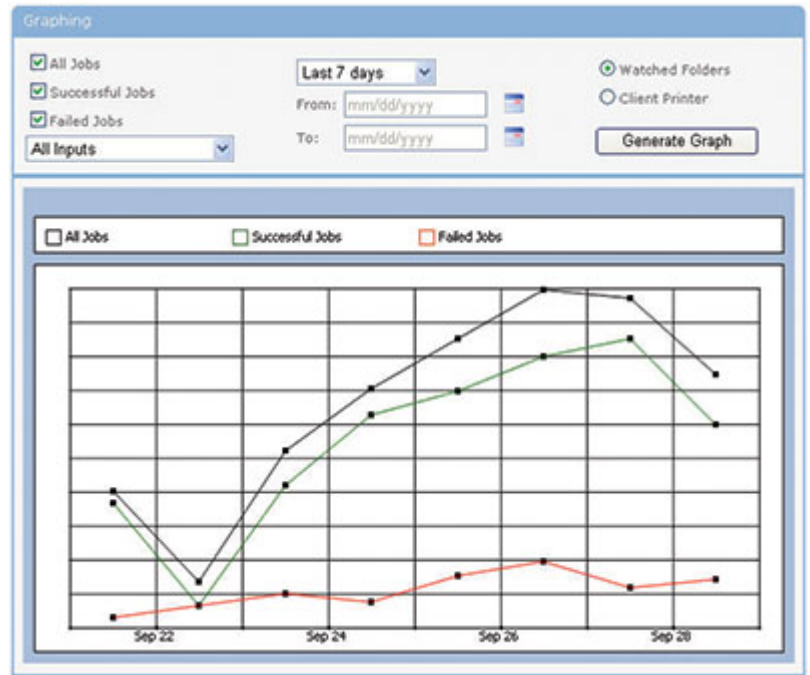
Bluebeam Conversion Server 3.0 includes a new web interface that allows administrators to monitor the status of jobs and view reports remotely.

- View job status
- Review and resubmit failed jobs
- Generate reports
- View lifetime statistics

Bluebeam Conversion Server Features

- Uses Bluebeam's proven file creation technology to convert AutoCAD (.DWG), SolidWorks (SLDDRW, SLDPRT, SLDASM), Word (DOC), Excel (XLS), PowerPoint (PPT), Postscript (PS), and PDF files
- Converts any other Windows file type that the server can issue a "print command"
- Converts CAD and Windows files to 10 file formats (PDF, TIF, JPG, GIF, BMP, PCL, PNG, PSD, EMF, and WMF)
- Converts DWG files to DWF
- Converts from postscript (PS) to PDF
- Web based interface for monitoring conversions and viewing reports
- Server Manager for easy configuration and control
- When converting to PDF from AutoCAD, SolidWorks, Word, Excel & PowerPoint, the following features transfer:
 - File properties
 - Hyperlinks
 - Text stamps

- Users can print files to Bluebeam's Network PDF Printer for conversion.
- Converts CAD and Windows files to ten file formats (PDF, TIF, JPG, GIF, BMP, PCL, PNG, PSD, EMF, and WMF).
- The Network PDF Printer interface offers the flexibility to choose:
 - File name
 - Folder to save the converted file
 - Image Resolution
 - Image Compression
 - Line Merge support
 - Rotation



Programmatic Interface (API)

- Bluebeam Conversion Server customers will have complete access to the Bluebeam API.
- .NET API (Visual Basic .NET, C#)
- The Programmatic Interface allows customers to control:
 - Specific file type
 - Defining page sizes
 - Applying text stamps
 - Specify input and output files

AD-TECH/SAFARI SYSTEMS

524 Busse Highway
Park Ridge, IL 60068

(847) 692-7320

<http://www.adtechi.com>

adtech@adtechi.com