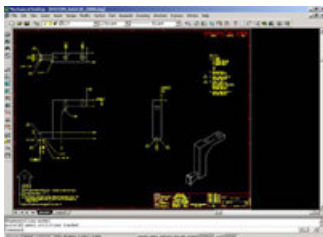


AutobuildZ for Pro/ENGINEER Wildfire

So, you're thinking about moving to 3D, but you are worried about the thousands of 2D legacy drawings you've already got. Well, worry not! Pro/ENGINEER has all the tools you'll need to maintain these 2D drawings or to reuse them to create fully functional 3D solid models.

AutobuildZ is a plug-in application for Pro/ENGINEER Wildfire that allows users to create fully parametric, feature-based 3D models from 2D drawings. With AutobuildZ and the powerful data exchange capabilities in Pro/ENGINEER, you can directly import 2D drawing files – including AutoCAD DWG and DXF files while retaining design intent (layers, dimensions, notes, symbols, text fonts, line types).

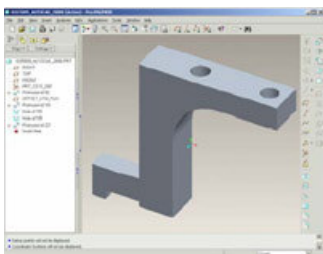
While the combination of AutobuildZ and Pro/ENGINEER excel at maintaining existing drawings, they also provide a simple and natural progression to realize the full benefits of "going 3D." With easy to learn and use tools, you can now transition your 2D data and your 2D-trained workforce to 3D. AutobuildZ delivers the legendary power of 3D modeling in Pro/ENGINEER via a intuitive, wizard-based approach that captures all the design content needed to create Pro/ENGINEER features right from the familiar 2D drawing environment. AutobuildZ will also automatically generate a 2D drawing that is smart enough to update associatively anytime a change is made to the 3D model. With Pro/E Wildfire and AutobuildZ, you can make best use of your valuable 2D data while moving in a new direction – the Z direction!



2D Drawing in AutoCAD

Leverage 2D legacy data in 3D designs

Extensive suite of simple, easy to use tools to help you reuse your legacy 2D data for creating 3D fully parametric, feature-based Pro/ENGINEER models.



Parametric, feature-based 3D Pro/ENGINEER model created using AutobuildZ

"User-in-the-loop" to capture and reuse design intent

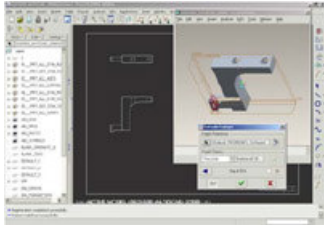
Semi-automated approach ensures that the user is fully controlling the process. Wizards guide the user in capturing and reusing design intent from the drawing in creating features in the 3D model.

Train 2D workforce in 3D modeling concepts

The powerful, but simple tools in AutobuildZ promote the transition of the design workforce from one trained for a 2D environment to one capable of designing in the 3D world of Pro/ENGINEER.

Transition at your own pace

Once you starting creating features using AutobuildZ, you don't need to complete the process in a single working session. AutobuildZ will automatically save all the relevant information to the drawing file, so that the next time you bring up the drawing you can continue where you left off.



AutobuildZ Feature Wizards

Wizards for feature creation

Feature creation wizards guide you through the process of creating features by selecting the design content for the Pro/ENGINEER features right from the drawing. You can create typical sketched features such as extrusions, cuts, revolves, and holes, or non-sketched features such as datum planes. The feature wizards also employ the same icons and options that you will encounter when designing directly in the 3D environment in Pro/ENGINEER.

Add "intelligence" to your imported drawing

Often with translation of 2D design data, numerous factors results in lost intelligence, resulting in drawings comprised of "dumb" 2D entities. With AutobuildZ, you can add intelligence back to the drawing by grouping logical groups of entities to represent 2D views (e.g., orthographic, section, auxiliary). In addition, you can also further organize the drawing data on layers for later reuse.

Constant visual feedback in 2D and 3D

The feature creation wizards provide you with constant visual feedback as you select design content for feature creation. Entities you select on the drawing are highlighted and maintain this status (in a secondary color) during the feature creation process. You can preview the 3D features being created directly from the drawing environment.

Automatically create 2D drawings from the 3D model

Sometimes, the 3D model is not the ultimate deliverable, especially in a manufacturing environment. A fully annotated 2D drawing is still required to product the part manufactured on the shop floor. AutobuildZ will automate the creation of a 2D drawing identical to the original but with intelligence, associatively updating anytime a change is made to the 3D model.

Support for assembly drawings

If your imported drawing represents an assembly, AutobuildZ provides you with the flexibility to create multiple Pro/ENGINEER parts from the single drawing. You can switch back and forth between these models, choosing which one is currently "active" and into which features will be created.