

ZwCAD[®] Newsletter — April, 2007

ZwCAD 2007--Most Reliable DWG-based CAD for Drafting

ZwCAD recently announced the official release of ZwCAD 2007, the powerful and affordable professional CAD product compatible with mainstream CAD program.

The latest release version - ZwCAD 2007, provides dramatic new functionality and unrivaled DWG compatibility. Below, we would like to draw your attention to some useful additions and improvements.

DWG 2007 Support

The 2007 version read and edit DWG files saved in numerous versions (DWG Version 2.5 to 2007), without conversion or data loss. ZwCAD provides high compatibility with AutoCAD.

Improved user interface

ZwCAD 2007 enables users to choose their own interface, selecting from Office XP, Windows Vista, Windows XP Lunar, and Windows XP Royale. Tabs for multi documents and dedicated dialog box such as Plot dialog box also give great facilities for users. With a more comfortable operation interface, users can create and switch to a new document easily.

Publish support

Now it is possible to create a single DWF that contains many drawings. Creating a drawing set to distribute for review can be complicated and time consuming, but Publishing provides an easy way to do this which can greatly improve your efficiency..

VBA/LISP improvement

Guaranteed by a mass of projects collected from our customers, refined VBA/LISP interface greatly improve the compatibility and protect your work.

Better 3D Modeling & Editing

Includes all 2D&3D features, exclusive functions of the Professional version will make your drawing more realistic.

With a number of enhancements, such as Entity Snap in Paper Space, Shade/Hide support with shadow effect, Multi Viewports support in model space, Hatch-clip, etc., we can know that users will benefit a lot while using it, for all its improvements intended to bring more efficiency to the design process.

To use ZwCAD 2007, you need not uninstall the previous ZwCAD versions in your PC; that means ZwCAD users can upgrade easily. For more information, a free download or to purchase ZwCAD 2007, please go to <http://www.adtechi.com>.

Continued on page 2

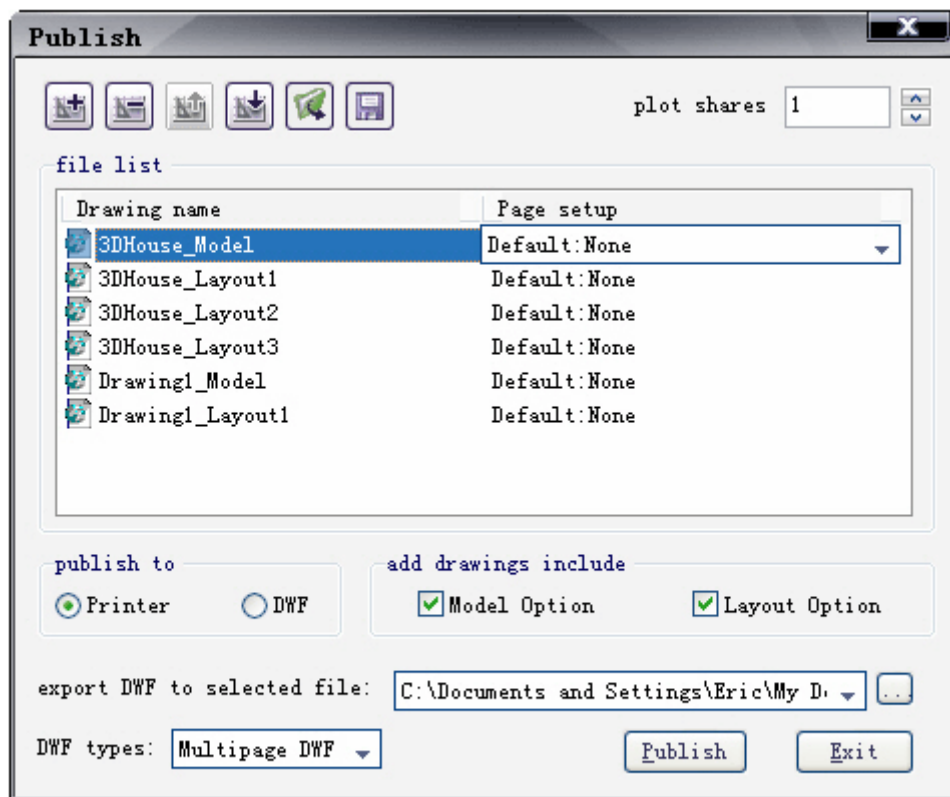
Tutorial 10 Publish drawings to plotters or DWF files

Creating a paper or electronic drawing set to distribute can be tedious and time consuming, but Publish provides an easy way to do this which can greatly improve your efficiency.

Using the Publish function, you can easily assemble a collection of drawings and, with one click, create a paper drawing set or an electronic drawing set. You can create a paper drawing set by publishing the drawings to the plotter named in each drawing's page setup. You can create an electronic drawing set by publishing the drawings to a single or multiple DWFs. Also you can save the drawing list as a Drawing Set Descriptions (DSD) file.

- Command: Publish
- File menu: Publish.
- Standard toolbar: Publish

The Publish dialog box is displayed. Click Publish to begin publishing the current drawing set to either a DWF file or a plotting device.



Publish..