

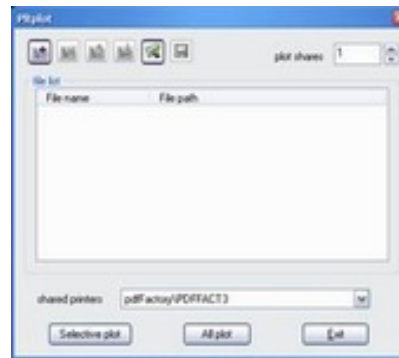
ZWCAD Newsletter — February, 2008

Tutorial 19 Batch Plotting with PltPlot

Just like [Publish](#), you can assemble a collection of .plt files to plot; specify the number of copies and save the .plt list which will benefit your productivity. You can plot only the .plt files selected or plot all at a time; you can change the order of the plot file list.

How to Use :

1. Set the plot conformation: printer, plot scale, number of copies, and so on;
2. Plot to file; (All of the *.dwg files shall be printed must set the same printer)
3. Run the command PLTPOLT, and add the plot files in.
4. Select the printer as the same as step2, press OK to start.



Note: all of the plot files must select the same printer when you set.