

ZwCAD[®] Newsletter — November/December, 2007

ZwCAD 2008 Release Soon

ZwCAD 2008, the reliable CAD for 2D & 3D design, now in the Beta testing phase will soon be released.

The new version ZwCAD 2008 not only includes many improvements to the existing features: increased speed; enhanced open, save, viewport, boundary search and selection; upgraded application program interface; improved user help system, etc., but also offers important new additional features which will greatly facilitate your drafting. The new features include:

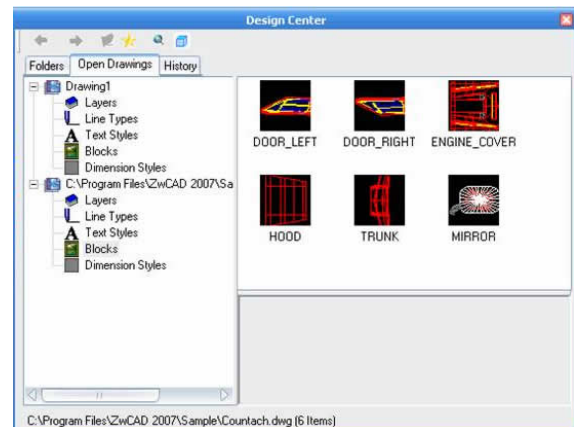
- Quick Calculator
- Innovative Merge Print
- Brand-new Design Center
- Convenient Attribute Extraction
- Effective Dimension Replace

Tutorial 17 Applying Design Center

With improved Design Center in ZwCAD 2008, you can:

- Browse for drawings, blocks, dimension styles, and other drawing content on your computer and a networked drive.
- View definition tables for named objects such as layers and dimension styles in any drawing file and then add the definitions into the current drawing.
- Locate and search the file used frequently via favorites, history or search tools.

To start Design Center, locate the icon in the standard toolbar or you can choose it from the Tools pulldown. You can also type "adcenter" at the command prompt.



- The "Folders" tab will allow you to browse for drawings in a tree view and explore the drawing contents for layers, blocks, line types, text styles and dimension styles. You can also right click on a drawing and add it to the "Favorites" list via the "Add to Favorites" option. This will allow you to locate frequently used drawings very quickly.
- The "Open Drawings" tab will allow you to display the content of a drawing and copy it's data into your current drawing. Take the "blocks" for example, if you want to copy one of the block definitions to the current drawing, double click or right - click on the block and select the "Add Block" option. The selected block will be added to the current drawing.
- The "Search" tool allows you to find drawings locally or on a network based on name or file size.
- The "History" tab displays a list of files opened previously with Design Center. Double-click a drawing file from the list to navigate to the drawing file in the tree view of the Folders tab and to load the content into the current drawing.