

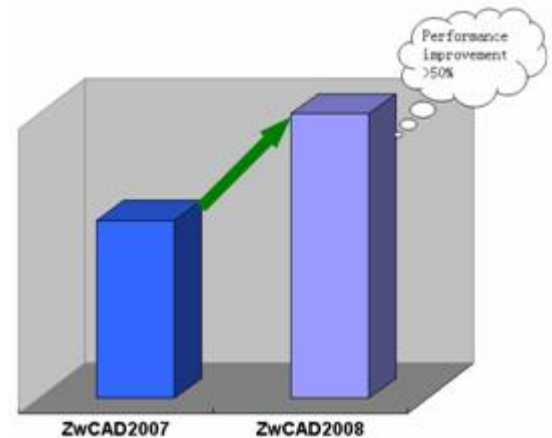
# What's new in ZwcAD 2008?

## Performance Improvements

### 1. Significant performance increase

Whether you are opening or saving a drawing, creating a hatch with complex boundaries, editing a layout with multiple viewports or selecting a huge number of objects, ZwcAD 2008 allows you to work more efficiently.

- Up to a 30% reduction in opening drawings.
- Up to a 70% reduction in saving drawings.
- Up to 10x faster in object selection.
- Up to 10x faster with Multiple Viewports in a layout.



### 2. New and improved algorithm for hatch boundary search

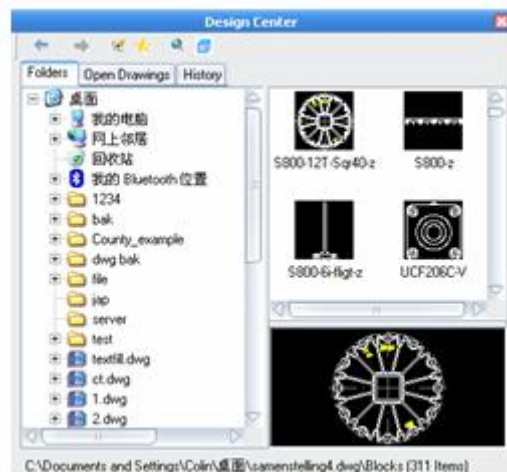
A new and more efficient algorithm is used for searching complex hatch boundaries, this translated into less calculations and faster response time. In addition, ZwcAD 2008 can also attempt to heal open boundary issues automatically.

- Up to 15x faster in hatch boundary selections.

## New Features

### 1. Design Center

The improved ZwcAD 2008 Design Center offers you a convenient way to manage dimension styles, blocks, text styles, line types and layers. Simply drag and drop these objects from other drawings locally or from a network into your current drawing. In addition, you can also search for drawings by name or by file size and create favorite links.



## 2. Quick Calculator

QuickCalc includes basic mathematical features similar to most standard calculators. In addition, QuickCalc has features specific to ZwCAD 2008 such as geometric functions, scientific functions, a Variables area, a Units Conversion area and a Text Calculate area. QuickCalc is also an expression builder.

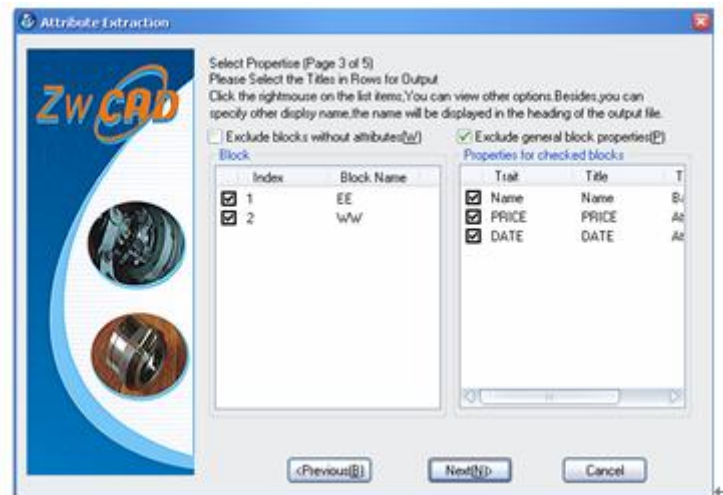


## 3. Merge Print (mprint)

Mprint offers a solution for merging prints between several drawings without changing the contents by using copyclip. You can merge several drawings to print just like using several viewports in one drawing, and you can arrange them by dragging them into the correct position and specifying a proper page size. If necessary, you can save the configuration to a file for reuse. ZwCAD 2008 has the only Merge Print function of any 2D CAD platform.

## 4. Attribute extraction

You can extract attribute information from attribute blocks and export it to a file. Attribute extraction is an excellent function to generate a list of materials directly from your attribute blocks. There is a step by step wizard that guides you through the process. There are several file formats for you to choose from such as .csv, .xls, .mdb, and .txt file formats.



## 5. Block Extraction

With this function, you can pick every block in the drawing and export it to another drawing directly, at the same time, the attribute information can be exported to a list.

## 6. Dimension Replace

With the Dimreplace function, you can change either specific or global dimension values easier similar to find and replace.



# Better APIs

## 1. DRX support

DRX programming interface (similar to ARX in AutoCAD®) is provided with the new programming interface. It makes migration of ARX applications possible in ZwcAD 2008 (Customized entities are not support in the current version).

## 2. Visual lisp Support

ZwcAD 2008 supports 80% of the Visual lisp functions now.

## 3. Encrypt lisp applications

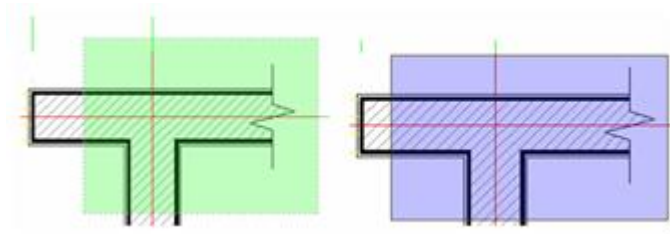
Encrypt lisp is now available to keep an author's lisp program protected from editing. In ZwcAD 2008, there are two modes for encryption (AES and 3AES). You can not only encrypt several lisp files at one time, but also create backups or use different extensions for the encrypted files.



# Easy To Use

## 1. Different color windows for selection areas

ZwcAD 2008 will display different color areas for window selections from right to left or from left to right. It allows you to distinguish between selection areas easier.



## 2. Dynamic prompt

Dynamic prompt displays context sensitive tooltip information near the cursor and is dynamically updated. When a command is active, the tooltips provide a list of all possible commands near the cursor. It allows you to specify one quickly before you inputting the entire command.

