

ZwCAD Installation and Registration Guide

Stand-alone license

Step 1 - Install ZwCAD 2008i

Step 2 - Install ZwCAD USB Key

Step 3 - Register ZwCAD 2008i

ZwCAD will run as a fully functional trial for 30 days without purchase or activation. An individual stand-alone license entitles the purchaser to run a ZwCAD product on a single workstation. You must install the USB Key into your computer and obtain a License Code to turn the trial into a live version.

Step 1 - Install ZwCAD 2008i

1. Insert the ZwCAD cd into your system. On the AUTORUN page, click "install ZwCAD 2008i Professional" or double click the installation file in the CD located in \SETUP\ZwCAD2008iEngp.exe.
2. On the ZwCAD 2008i setup page, click **Next**.
3. On the License Agreement page, read the license agreement and click **I Agree**. If you do not agree to the terms of the license, click **Cancel** to cancel the installation.
4. On the License type page, specify **Individual stand-alone license**, and then click **Next**.
5. On the Choose Install Location page, either accept the default folder or click **Browse** to specify a different location. If you enter a path that does not exist, a new folder is created using the name and location you provide. Click **Install**.
6. Click **Finish**.

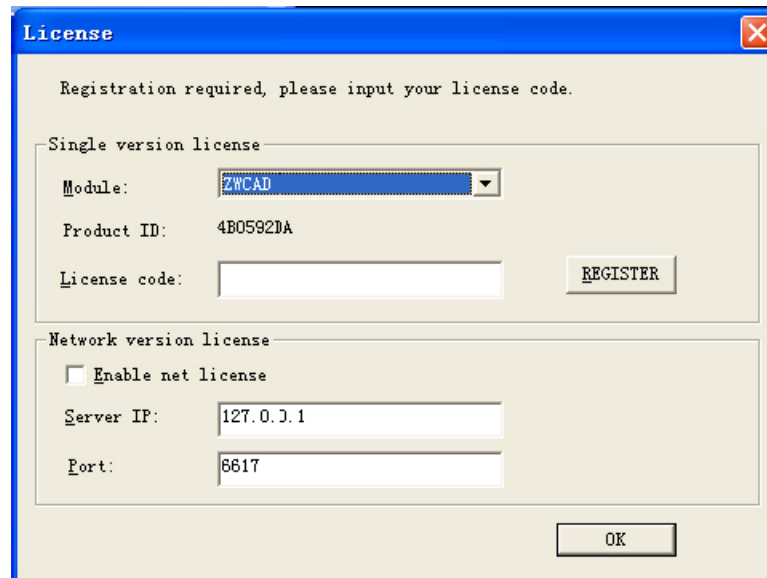
Step 2 - Install ZwCAD USB Key

1. Install the USB hardware-lock into your computer. Wait for the windows "Found new hardware" message to appear.

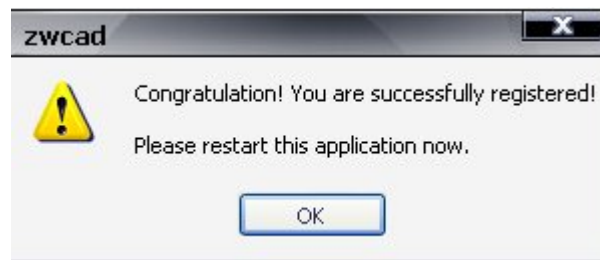


Step 3 - Register ZWCAD 2008i

1. Click the Windows Start Menu, click Programs > ZWCAD 2008i Professional > ZWCAD 2008i Professional, or double click the ZWCAD 2008i shortcut on the desktop.
2. On the ZWCAD menu, choose **Help > License**, you will see the sample License Dialog box shown below.



3. Email your **USB Key Number** and your unique **Product ID** number to Ad-Tech, Inc. at cada@adtechi.com and you will be given a **license code**. Enter your **license code** and then click **REGISTER**. When your ZWCAD has been successfully registered, you will see the screen below.



Congratulations! You are now ready to run ZWCAD.